

## Answer Enterprise Release 10.1 Highlights



### Whats New

Answer Enterprise Release 10.1, available from the 25th August 2006 introduces two new modules and contains a number of significant enhancements.

The **Dynamic Business Dataviews** module brings linked user definable queries to Answer which can display operational and analytical data the way you want it.

The **Answer Point Of Sale (POS)** module extends the Answer Retail product line to provide integrated on-line retail sales facilities to Answer Enterprise and Answer SBE.

For full details of these and all other release changes, please see the Release Overview document, available in the **documentation** directory of the Release CD.

### Dynamic Business Dataviews Module

This exciting new module can help you to build a better understanding of your business by providing the up to date, relevant information that you need.

Dataviews are completely user definable and can be tailored to show the information you need to see in the format you require.

Use dataviews to make the most of any opportunities as they arise, identify and resolve any potential issues before they happen and improve customer service.

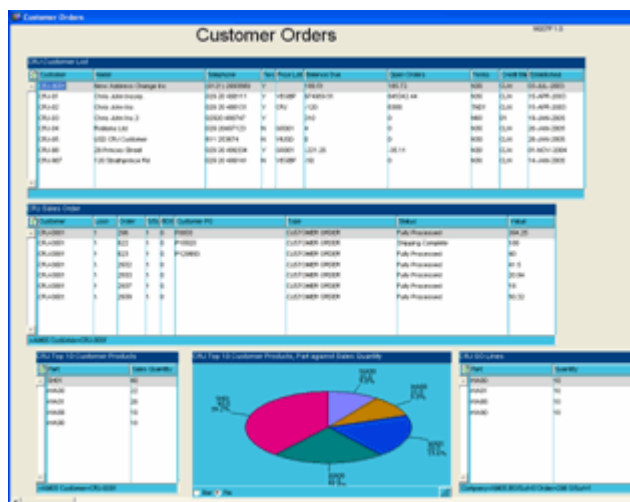
Dataviews sit over the Answer database and can manipulate operational and summarised Analytics data to produce information for better informed decision making.

Each window included in the dataview can be linked to the others and information is on demand.

Create dataviews to show the key business performance information you need.

Group together relevant, related key business performance information in user defined windows.

Change the display to suit you using either tabular or graphical formats or a mixture of the two. Windows can also be repositioned to suit each user.



A Customer Orders dataview set showing linked order details and top ten products list and graph driven from queryable customer list.

### Release 10.1 Enhancements and Changes

- New Dynamic Business Dataviews Module
- New Answer POS Module
- Credit Limit Change Tracking
- Statement Tracking Facility
- Customer Booking/Pick Up
- Sales Order Margin
- Save As Quotation Facility
- Cost Roll Up
- Back Orders On Hold
- Perform Inventory Period Close by Company
- Part Cost Date Setting
- Ability to change on-screen field names and labels
- User Retirement Facility
- Extending Part Lookup Facilities
- Track Credit Limits, Statements, Dunning Letters

See the Overview document on the release CD for more details.

# Answer Enterprise Release 10.1 Highlights



## Answer Point of Sale (POS) Module

The Answer Point of Sale (POS) provides full point of sale functionality whilst being fully integrated with all Answer modules such as Inventory Management, Accounts Receivable, General Ledger, Cash Book and Contact Centre.

Answer POS features include Sales, Returns, Refunds, Exchanges, No Sales, Cashing up and Float capabilities. Building on the existing Answer Retail Management module all your retail activity is visible immediately within Answer.

The introduction of Answer POS module sees a restructuring of the Answer Retail product line which now allows scalable and manageable retail operations from single shop to large scale multiples and internet/mail-order sales—all based on the proven Answer Enterprise infrastructure.

Today's shoppers have less time to dedicate to their shopping, they come better informed and expecting a lot more from retail outlets.

The main aim for retail has to be to captivate any occasional shoppers and turn these into customers for life.

Answer POS software can help even the largest, most diverse retailer to do just that with the responsiveness, flexibility and scalability required.

Next generation functions are included for companies looking to the future, ready to handle fulfilment of web generated orders, process returns for web purchased items, look up cross store inventory and access your retail website.

Customer service in today's retail environment needs to go that little bit further. In addition to the traditional point of sale functionality and well trained, helpful staff, you need access to information that will help to increase store sales and beat the competition.

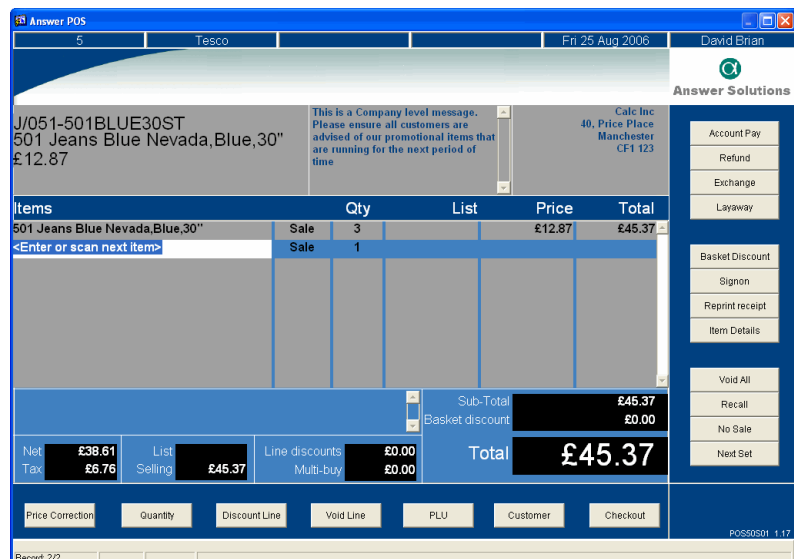
Once the sale is made you need reliable real time data from the store to feed into the merchandising and financial systems that can help to make the difference and achieve operational excellence.

Answer POS is designed to make it easy for you to tailor it to suit your business needs and to implement an integrated, customer focussed business strategy.

Highly flexible, Answer POS provides you with today's must have customer service capabilities and the ability to easily add new functions as required.

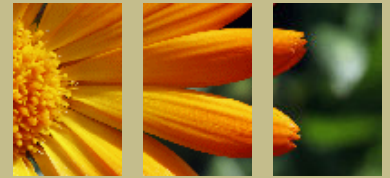
The Answer POS application provides robust customer profile and preferred customer information, an extensive transaction set and flexible operations options.

*'Answer POS has the responsiveness, flexibility and scalability required for even the most diverse retailers.'*



Entering retail transactions through Answer POS

# Answer Enterprise Release 10.1 Highlights



## Answer Retail Products

With the introduction of the Answer POS module, Answer Solutions has restructured its Answer Retail product line.

Answer now offers a scalable collection of retail applications designed to suit the whole range of retail businesses, from small companies with one outlet through to large chains with multiple stores and tills.

### Transact with Transact Manager

Offers the complete solution for the smaller retailer. Basic retail needs are catered for in a neat, easy to use package.

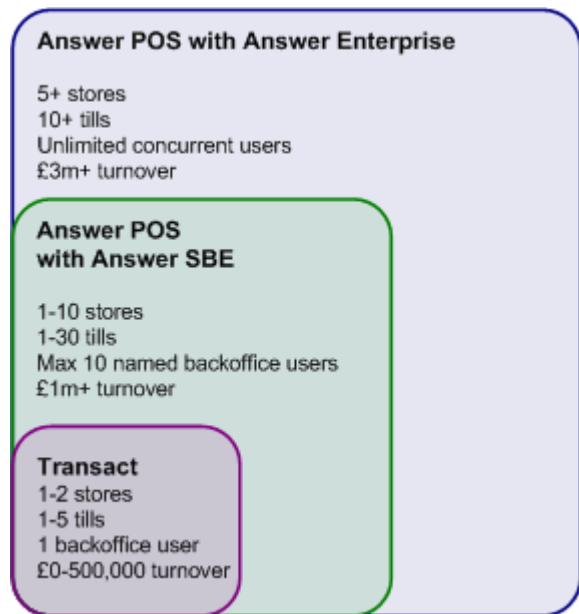
### Answer POS with Answer SBE

Caters for the mid sized business with several outlets, multiple users and full back office functions including financials.

### Answer POS with Answer Enterprise

Perfect for the larger retailer and will fully integrate all processes and business requirements, ensuring your business runs smoothly.

For all retail packages easy to use and feature rich reporting facilities are essential. Answer's award winning business intelligence tool **IcanCiT** is available with all modules and products.



*Scalable solutions for retail operations*

## Answer Support Website

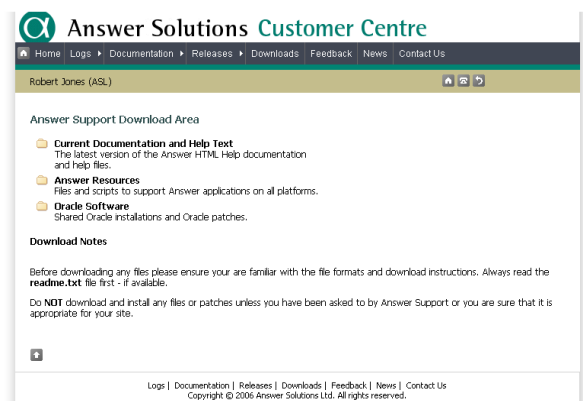
<http://www.answersolutions.com/support>

The Answer Support website has been redesigned to match the new Answer Solutions website.

If you do not have a User ID and password needed to access the website then contact Answer Support.

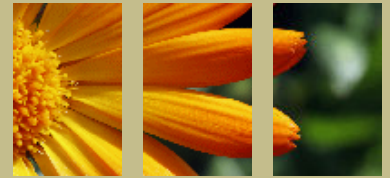
From the Support website you can:

- Check on the status of all your logs with Answer Support
- Create new logs and add information and attachments to existing logs
- Browse the latest Answer documentation including guides and FAQ's
- Download all release documents and installers as well as other useful tools and utilities



*New style Answer Support website*

# Answer Enterprise Release 10.1 Highlights



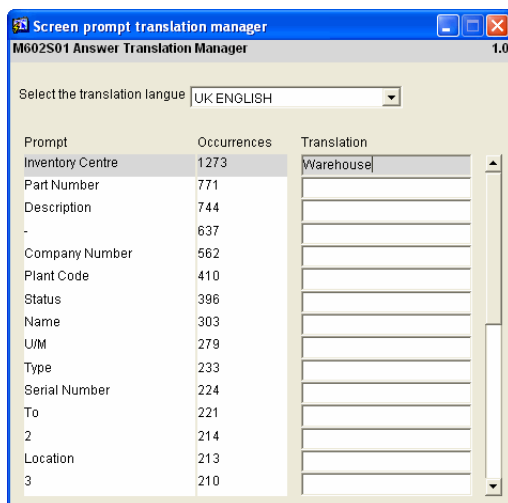
## Changing Screen Prompts

A new program M602P is now available to change the screen prompts on Answer forms. While this can be used to translate Answer screen prompts into different languages it can also be used to change screen prompts to use your own terminology, e.g. display the prompt 'Warehouse' instead of 'Inventory Centre'.

To run M602P you will need an additional data file from Answer which contains details of the existing screen prompts.

There are some instances where screen prompts will not be changed, e.g. in headings for older style multi-row displays.

Contact Answer Support for more details of coverage and availability of configuration data.



*Changing the Inventory Centre prompt to Warehouse*

## Licensing

Whilst the Dynamic Business Dataviews and Answer POS modules are available with this release Answer Solutions reserves the right to make these separately licensable in the future.

## Contact Us

### Answer Solutions Ltd

The Innovation Centre  
Festival Drive  
Victoria Business Park  
Ebbw Vale  
NP23 8XA

**t:** 01495 356771

**f:** 01495 356774

**e:** [info@answersolutions.com](mailto:info@answersolutions.com)

**w:** [www.answersolutions.com](http://www.answersolutions.com)

## Answer Support Website

The Answer Support website contains full details of this and future releases.

The website also contains full online documentation and the ability to enter and track all your support logs.

Contact Answer support if you are not already registered to access the website.

**e:** [support@answersolutions.com](mailto:support@answersolutions.com)

**w:** [www.answersolutions.com/support](http://www.answersolutions.com/support)

Answer Solutions