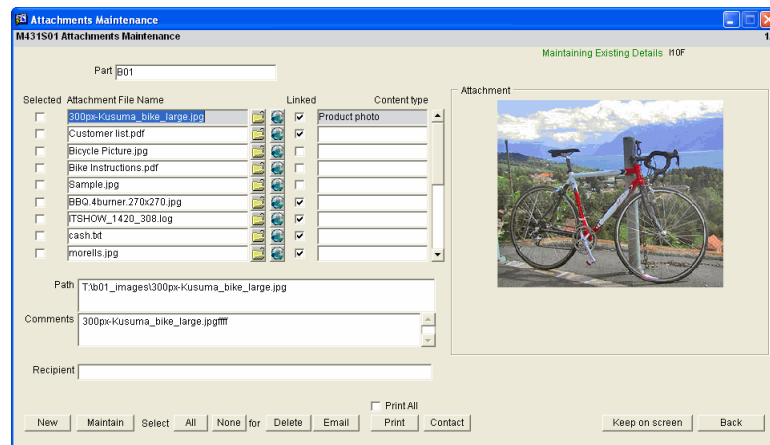


Attach key objects to Answer structures

- ▶ Attach any form of document, sound, image
- ▶ Fully integrated into Answer
- ▶ Link or store details
- ▶ View and print attachments

Use Answer Attachments to ‘attach’ any form of document, image, sound or file to key Answer structures.

Attachment facilities are integrated into Answer Enterprise and clearly available at all appropriate points.



This will enable you to attach anything you need including instructions, receipts, drawings, invoices, even music or voice recordings.

Attaching instructions to a work order/schedule could save vital time and money while parts are being manufactured.

Examples of document attachments:

- ▶ Plant Drawings and Manufacturers Service Statements, attached to Plant and Plant Component items
- ▶ Process/Receipt Instructions attached to Manufactured Parts and Work Order/Schedules
- ▶ CAD/CAM Drawings and Instructions attached to Manufactured Parts and Work Order/Schedules
- ▶ Supplier Invoices attached to Vendors
- ▶ External MSDS, COA and COC's attached to Parts
- ▶ PIP's (Product Information Pack) by Part

Quick and easy attachment methods

There are two methods for attaching an object:

- ▶ **Linking** – a path points to a shared area containing the attachment
- ▶ **Stored** – the attachment is physically stored in an Answer database

Straightforward instructions mean the attachment centre is quick and easy to use.

Wherever you see the Answer 'Clip' logo  attachment facilities are available.

Attachments can be easily viewed and printed using Answer Enterprise.

Additional Information can be associated with Attachments, including:

- ▶ Category Analysis
- ▶ Department Analysis
- ▶ Content Analysis
- ▶ Authoring/Publishing Analysis
- ▶ Dates, Versions and Comments

The Attachments enquiry will use this information when searching for Attachments.

For more information visit the Answer Solutions website or contact us.

Answer Solutions Ltd

The Innovation Centre
Festival Drive
Ebbw Vale
NP23 8XA

w: www.answersolutions.com
e: info@answersolutions.com
t: 01495 356771
f: 01495 356774