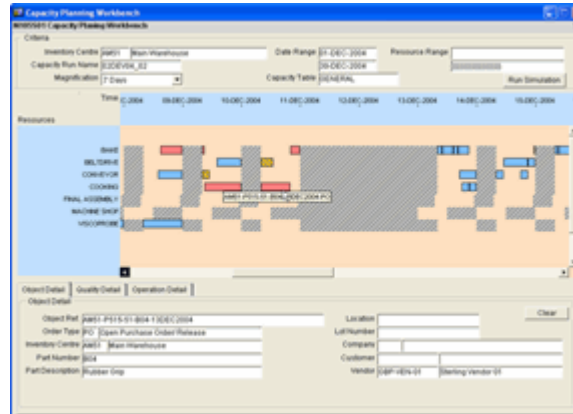


Control and predict financial outgoings

- ▶ Produce capacity planning reports and enquiries
- ▶ Use released and planned work orders to predict requirements
- ▶ Use multiple demand inputs
- ▶ Backward and forward scheduling logic
- ▶ Full review and action processing in graphical formats

Answer Capacity Requirements Planning (CRP) makes it possible to recalculate the Capacity Plan and produce Capacity Planning reports and enquires.

Fundamental for the smooth running of the company and vital for controlling and predicting financial outgoings.



Answer CRP uses the concept of a **demand driver** set of Answer objects that require an element of capacity of a particular work centre/resource. The full set of demand drivers capable of being used in a CRP run are:

- ▶ Customer Orders
- ▶ Inter Company Customer Orders
- ▶ Customer Quotations with a given level of confidence
- ▶ Open Works Orders
- ▶ Firm Planned Works Orders
- ▶ MRP or MPSP Planned Orders from a nominated simulation
- ▶ Quality Management Test Requests where Instruments and/or Technicians are linked to a Work Centre/Resource structure
- ▶ Inventory/Stock details, Part/Location/Lot Quantity that are expiring/have expired their shelf life or are due for an M-test where the Part is linked to a Quality Specification with Work Centre/Resource implications
- ▶ Open Purchase Orders where the Part to be received is linked to a Quality specification with Work Centre/Resource implications
- ▶ Open Plant Maintenance Job Orders
- ▶ Planned Plant Maintenance Job Orders from a nominated simulation

Answer CRP integrates with Inventory Management and Sales Order Processing, MPSP and MRP, Purchasing, Quality Management and Plant Maintenance modules.

It will ensure your Resources/Work Centre Capacity is managed in the optimal manner for your business.

How does Answer CRP work?

CRP calculations manage different capacities and loads by Work Centre/Resource. The Capacity Requirements Plan processes, reschedules all open and planned work orders using backward scheduling.

Backward scheduling logic calculates each operation backwards from the work order due date using the operation capacity impact times together with the work centre/ resource times to calculate Latest Operation Start and Completion Dates.

CRP load calculations plan down to a daily bucket so that under and overloads can be reviewed. CRP, constraint based planning and scheduling and planning down to hours and minutes are facilities supplied by our partner product, Preactor.

A standard export facility to Preactor is available as well as configuration options, Preactor Upload capability and enquiries.

Forward Scheduling logic schedules each operation forwards from the work order schedule start date using the operation capacity impact times with the work centre/ resource queue and wait times to calculate Earliest Operation Start and Completion Dates.

The Work Centre/ Resource Load summary is the primary output of CRP Calculations. The summary compares the load created by the demand driver selection, with the available capacity for each Work Centre/ Resource. Over/Under Load and Cumulative Over/Under Load is calculated for each period.

The system uses the Shop Floor Calendar to calculate the actual number of working days in a period. The working days are then multiplied by the work centre/resource capacity to calculate the capacity per time period.

Plant Maintenance Preventative Maintenance Simulation Plans can automatically reserve capacity for Work Centres in order to carry out preventative maintenance. This reserved capacity is taken into consideration by both backward and forward scheduling.

How can I use Answer CRP?

Produce unlimited multiple CRP simulations including Capacity Definition tables, Forward and Backward Scheduling, Work Centre/Resource loading calculations and the option to apply Time Grouping.

You have unlimited Capacity Table definitions and unlimited Resources/Work Centres per Capacity Table.

There are Capacity Reservation facilities and daily Capacity Rates that can be based on budgeted, normal or maximum hours.

It is possible to globally update the budgeted, normal or maximum hours and the Capacity Multipliers if required as well as the global purge facilities.

Optionally update Reserved Capacities from Plant Maintenance Preventative Planning.

Answer CRP gives flexible, user defined grouping for enquiries and reports. Grouping can be done in periods of days, weeks, months or years with user defined period lengths and repeats available if necessary.

We also offer full review and action processing so that you can view Underloads, Overloads and Exact Balances all in graphical format. These can be colour coded for ease of use.

You will also be able to link Capacity to Capacity Demands for Issue Resolution.

You will have a Work Centre capacity enquiry that displays activity against the Work Centre/Resources in a colour coded format.

This is also available in an hour-by-hour format where you can review, for Work Centre/Resources, details of Unavailable Lines, Reserved Time, Set Up, Run Machine and Clean Up as well as Completed Operations and, where multiple operations exist, within the hour display.

There are various reports available:

- ▶ Work Centre/Resource Load Analysis report, and by Time Group
- ▶ Work Centre/Resource Variable Capacity report, and by Time Group
- ▶ Colour coded Underloads, Overloads, Reservations and balanced situations

For more information visit the Answer Solutions website or contact us.

Answer Solutions Ltd

The Innovation Centre
Festival Drive
Ebbw Vale
NP23 8XA

w: www.answersolutions.com
e: info@answersolutions.com
t: 01495 356771
f: 01495 356774