

## Up to date information for better informed decision making

- ▶ Provides up to date, relevant information
- ▶ Completely user definable
- ▶ Dataviews sit over the Answer database
- ▶ Link windows within a dataview
- ▶ Show KPI's you need
- ▶ Use tabular or graphical formats
- ▶ Reposition windows to suit the user

Provide management with the up to date, relevant information to improve business understanding and make timely, informed business decisions.

Dataviews are completely user definable and can be tailored to show the information you need to see in the format you require.

- ▶ Determine Selection Criteria, Detail Rows and Additional Details
- ▶ Format Fields
- ▶ Graph information
- ▶ Conditional Highlighting
- ▶ Summarise
- ▶ Drilldown for more detail
- ▶ Take advantage of Answer right-click enquiries
- ▶ Extract to Excel, PDF, etc.

Use dataviews to make the most of any opportunities as they arise – identify and resolve any potential issues before they happen and improve customer service.

Dataviews sit over the Answer database and can manipulate operational and summarised Analytics data to produce information for better informed decision making.

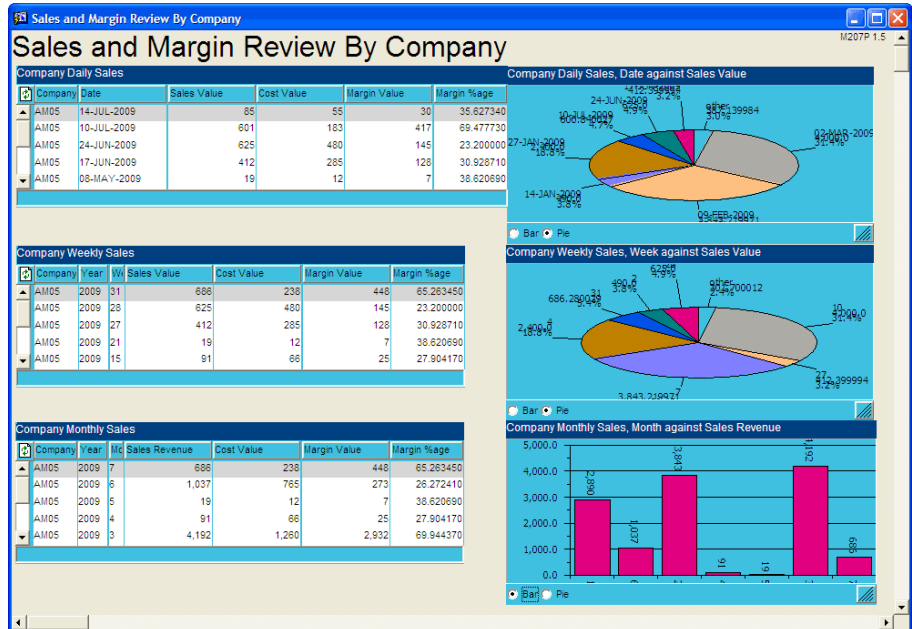
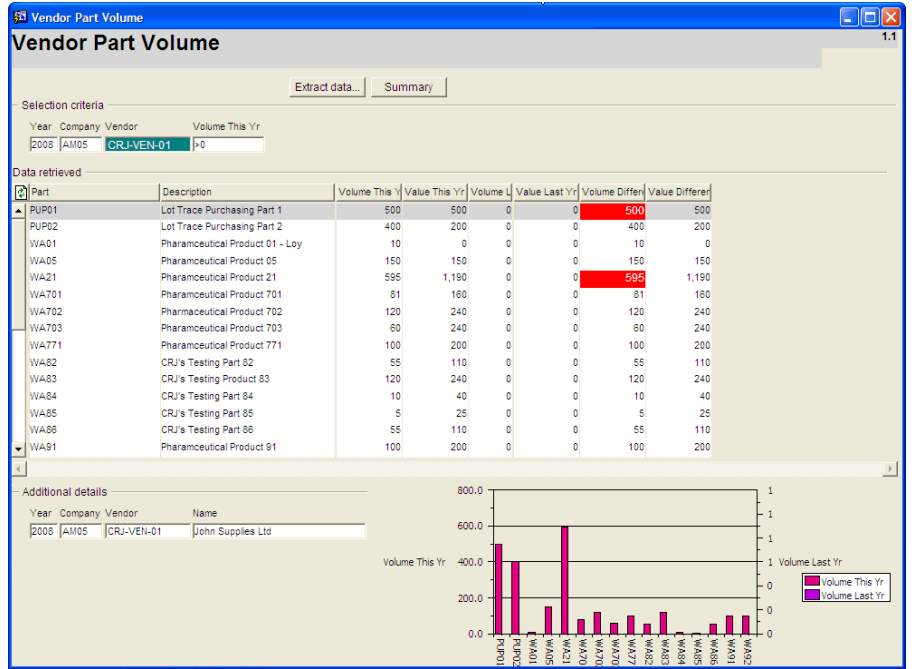
Group dataviews into Data Collections, where they can be linked to the others and information is on demand.

Create dataviews to show the key business performance information you need.

Group together relevant, related key business performance information in user defined windows.

Change the display to suit you using either tabular or graphical formats or a mixture of the two. Windows can also be repositioned to suit each user.

The following screen shows a Customers Orders dataview displaying linked order details, top ten products list and a graph driven from a queryable customer list.



## Key Features

- ▶ All dataviews are user definable
- ▶ Key Performance Indicators (KPI's) displayed using graphs, tables and drilldown
- ▶ Drill down to other dataviews for more transactional detail
- ▶ Several separate windows on screen each containing different information (subject to screen resolution)
- ▶ Pass relevant parameters when drilling across dataviews
- ▶ Customise dataviews for individual users by defaulting user related parameters
- ▶ Link windows to only show related information e.g. Sales Orders for a Customer
- ▶ Use Answer Analytic data to provide daily, weekly, period, monthly, quarterly and year to date summaries
- ▶ Attach dataviews to user menus
- ▶ Use Answer Security to secure access to dataviews
- ▶ Links enabled to standard Answer Customer, Vendor and Part enquiries
- ▶ Sortable headings allow data to be sorted, filtered and graphed at the click of a mouse
- ▶ Re-arrange the sequence of data using drag and drop
- ▶ Use Oracle Query functions to select the relevant data
- ▶ A dataview can be a collection of related and unrelated data
- ▶ Export data to Excel
- ▶ Optionally display in PDF or HTML formats

For more information visit the Answer Solutions website or contact us.

### **Answer Solutions Ltd**

The Innovation Centre  
Festival Drive  
Ebbw Vale  
NP23 8XA

w: [www.answersolutions.com](http://www.answersolutions.com)

e: [info@answersolutions.com](mailto:info@answersolutions.com)

t: 01495 356771

f: 01495 356774