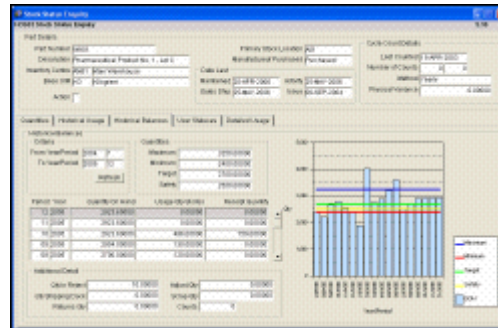


Control the pressures of supply and demand

- ▶ Flexible inventory management
- ▶ Increase productivity in the warehouse
- ▶ Designed for rapid, high volume entry
- ▶ User definable transactions
- ▶ Improve accuracy
- ▶ Comprehensive validation rules
- ▶ Sophisticated planning
- ▶ Available To Promise and allocations
- ▶ Comprehensive cost information
- ▶ Verification Security definition
- ▶ Full Movement Analysis

Have the flexibility to define the Inventory structure and controls important to you.

Powerful features allow management of multiple Warehouses, each with multiple locations. Control items by serial number, lot number and stock location, with complete inter site transfer capabilities to facilitate stock movement and replenishment.



High productivity

Increase productivity in your warehouse using the range of tools provided. Users may choose to create their own transactions using Answer's unique Transaction Builder.

Transactions are fully integrated into the General Ledger, Projects and optionally into the Contract Cost Control facility to provide comprehensive cost information and reporting.

Improved accuracy

Improve the accuracy of your inventory system with comprehensive validation rules to verify data integrity.

Stock Outs and Period End problems are avoided with powerful ABC analyses, Cycle Counting and Physical Inventory Tools.

Sophisticated planning

Maximise service levels and optimise inventory investments using the sophisticated planning tools available with Answer Inventory Management. Multiple planning techniques based on both independent demand (statistical) and dependent demand (Manufacturing Resource Planning) are available. This allows you to make better informed Inventory replenishment decisions with automatic integration to create Purchase Requisitions or Purchase Orders.

ATP and allocations

These enquiries are designed to inform you when stock you are requesting will become available, taking into account all sources of supply and demand. See the impact of planned order recommendations from the latest simulated working MRP and/or MPSP plan.

You can also create allocations for specific items to ensure you fulfill order commitments.

Comprehensive cost information

Complete accounting transaction visibility, with on line analysis. Use standard, last, weighted average or actual costs specified on a part by part basis if required.

Accounting activity can be transferred to the General Ledger at period close or at any time during the period.

Costs are also analysed by Project/Task and/or Contract.

Manage all your Inventory requirements for optimum customer service and production efficiency. From discrete products stocked as each, cases or pallets to components, bulk powders, liquids and ingredients. Foodstuffs, high value potent chemicals, products in pre-filled packs/containers or Vendor Consigned Inventory can all be effectively managed.

Manage your legal obligations

Use the Fill Volume definition and recording facilities to quickly see when filled products are in or out of user defined tolerance levels.

Use Product Verification processing to confirm that what should be filled/packed is actually what is being used.

Define additional levels of Verification Security at Main Output Part, Input Part, Operational Time Bookings, Specification Detail Recording and Operational Lot Detail Usage Recording to ensure the right people verify, multiple verifications enabled, everything was correct.

As a fundamental component of Answer Enterprise, Inventory Management is combined with Sales and Purchasing, the Planning modules MPSP and MRP, Plant Maintenance and Warehousing, Bills of Material and the Relational Process Model, Manufacturing Management, Manufacturing Execution Systems, Quality Management and Financials.

Manage Inventory

- ▶ Shelf life, best before dates, display until and use by dates
- ▶ Unlimited units of measure and multiple conversion types
- ▶ Master Lot and Lot control, traceability and tracking, and associated Quality Management results
- ▶ Multiple Lot Generation Methods including 'manual'
- ▶ Serial number tracking
- ▶ Potent parts and graded parts
- ▶ Balance, count up, back flush and forward flush parts
- ▶ Define parts that have up to 10 user defined attributes or feature codes
- ▶ Cost definitions standard, actual, last, average, LIFO, FIFO valuations
- ▶ MSDS tracking and printing
- ▶ Catchweight parts with dual units of measure
- ▶ Filling volumes and specific gravity parts
- ▶ Bar coding requirements
- ▶ Ability to store 'attachments' by part, pictures, specification and more
- ▶ Quality Management test request generation requirements
- ▶ Unlimited inventory centres (warehouses)
- ▶ Unlimited bins/locations
- ▶ User defined inventory codes
- ▶ Define Alternative U/M for stock display purposes
- ▶ Vendor consigned inventory facilities
- ▶ Controls stores, WIP, receiving/inspection, in transit
- ▶ Inventory is defined by bin/location, lot number and associated status codes
- ▶ Transaction specification builder to define user required transactions and data requirements
- ▶ Pack/container inventory
- ▶ Plan inventory replenishments using re-order point facilities, creating requisitions/purchase orders
- ▶ Available To Promise with the ability to overlay an MRP or MPSP simulated plan
- ▶ Available to promise with the ability to drill off to works orders, sales orders, purchase orders and so on
- ▶ Full inventory revaluation on cost changes with general ledger postings
- ▶ Consigned stock tracking and usage reporting
- ▶ Value inventory using standard, last, average, actual, LIFO or FIFO costs
- ▶ Multiple lot generation methods, some with user definable prefixes
- ▶ Define cyclical quality testing of stock to be run every nn days, based on Part
- ▶ Access Part related information by right clicking from any program where Part Number is available
- ▶ Track Tote/Containers for Sales purposes

Transact Inventory

- ▶ User Defined Transactions using a unique Answer Transaction Builder
- ▶ User Defined Transaction with multiple G/L Posting options
- ▶ All Transactions fully secured with appropriate Reason Codes
- ▶ Location Transfer
- ▶ Inventory Centre Transfer, single and multi line documents
- ▶ Inventory Status Code Changes at Bin/Location and Lot Level
- ▶ Change Master Lot Number Transaction
- ▶ Change Lot Number Split Quantity
- ▶ Change Shelf Life Dates
- ▶ Change Inventory Owner
- ▶ Change Other Key Dates
- ▶ Change Unit Of Measure Breakdown
- ▶ Change Specific Gravity
- ▶ Automatic Status Change based on Shelf Life Expiry
- ▶ Customer Returns Receiving
- ▶ Any other User defined Transactions to suit your requirements
- ▶ Full on line history and audit trail of all

- ▶ Part Number Change Transaction
- ▶ Change Potency Transaction
- ▶ Change Grade Transaction
- ▶ Change Lot Number Transaction

- Transactions
- ▶ Unlimited Comments per Transaction
- ▶ Record External Serial Numbers

Physical Inventory/Cycle Counting

- ▶ ABC Analysis Generation and Change facility
- ▶ Extract Details for Count by Part and/or Location or use Assigned Cycle Count Codes
- ▶ Control Group Facility
- ▶ Prepare Count Reports, Work to Lists
- ▶ Enter Count, also Enter Count via Hand Held Terminals
- ▶ Multi user Recording by CC Reference
- ▶ Count based on Item Attributes e.g. style, colour, size
- ▶ Validate Count for Accuracy and Value Variances prior to update
- ▶ Recount if and where necessary
- ▶ Update Count and account for Variances including Transaction History and General Ledger postings
- ▶ Processes Vendor Managed Consignment Inventory
- ▶ Manage Actual Costed Parts
- ▶ Enquire on current and historical cycle counts

Stores Requisition Management

- ▶ Requisition Entry, Print, Change, Close and Cancel
- ▶ Allocate Requisitions to Projects and Tasks
- ▶ Requisition Pick Document
- ▶ Requisition Issue Processing
- ▶ Requisition For Location and Inventory Centre Transfer Processing
- ▶ Report and Enquire on Parts where requisitioned, where short issued and so on
- ▶ Better control your stores for marketing, sales and exhibition purposes

Tracing and Tracking

- ▶ Master Lot and Lot Numbers 30 characters
- ▶ One Master Lot can have multiple Lot numbers associated with it
- ▶ Master Lot and Lot Control defined on an item-by-item basis
- ▶ Full Lot Trace and Track
- ▶ Raw Material/Component to Finished Goods/Customer and Back
- ▶ Traces and Tracks through all intermediate processing steps
- ▶ Trace by Master Lot, Lot and Shelf life
- ▶ Trace by Vendor Lot/Batch Numbers
- ▶ View Quality Management Test Request details for every Lot/Batch
- ▶ Right Click option on Lot Number for Quick update on all transactions for that Lot

Allocations Management

- ▶ Allocations enable you to reserve certain pieces of stock for certain purposes
- ▶ Create, Change, Delete Allocations, against Sales Orders, Work Order/Schedules, Requisitions, Plant Job Orders, Inventory Centre Transfers
- ▶ Automatic or Manual Allocation Creation
- ▶ Multiple Allocation Consumption options – FEFO, FIFO etc
- ▶ Automatically create Allocations on Work Order Receipt and Purchase Order Receipt for linked Items such as Sales Orders, Plant Job Orders and so on
- ▶ Process a Hard Allocation automatic run as a 'Simulation' and review what is fulfilled completely and what would be short
- ▶ Shortage reports for those parts either partially fulfilled or not considered

- ▶ Generate Allocations Picking Document
- ▶ Option to consider stock at 'Balance' or 'Available' level

- ▶ Further Allocation options available in Advanced Inventory Management

MSDS Management

- ▶ Define and Maintain Risk Phrases
- ▶ Enter, Change Emergency Actions
- ▶ Enter, Change Part Characteristics, Flash Point, Chemical Analysis etc
- ▶ Define MSDS Headings and details to print
- ▶ Define user definitions for Part Characteristics, Flash Point, Boiling Point and so on, in lieu of pre-determined look up codes
- ▶ Define Contained Chemicals details
- ▶ Define Transport details, UN, IATA, IMO, IMDG, CAS, ADR and more
- ▶ Define CHIP classification details
- ▶ Define Short, Medium and Long Term limit definitions
- ▶ Define Supplier details
- ▶ Define Monitoring Processes, Materials to Avoid, Usages and more
- ▶ Print MSDS Details for Parts and Sales Orders

Manufacturing Execution Management

- ▶ Supports multiple manufacturing methods for any one item
- ▶ Raise, Change, Cancel, Close Work Order/Schedules
- ▶ Multiple User Defined Work Order/Schedule types
- ▶ Ability to cater for multiple Component 'Variants' chosen at time of Sales Order entry
- ▶ Create 'filling' Work Order/Schedules where only repacking is undertaken
- ▶ Nominate Work Order/Schedules as 'Trial'
- ▶ Allocate Work Order/Schedule to Projects and Tasks and/or Manufacturing Contracts
- ▶ Raw Material/Component availability check before and after Work Order/Schedule release and full explosion of 'Phantom/Pseudo' structures
- ▶ Optional Auto Generation of Lot Number at Work Order Release
- ▶ Generation of Quality Test Request at Work Order Release. Quality Specification will determine Inventory Status and Specific Gravity at time of Work Order Receipt
- ▶ Print Picking documentation
- ▶ Optionally Hard Allocate Raw Materials/components, option to base this allocation on Quality Test Results
- ▶ Perform Work Order/Schedule Issuing Processing in full or simplified manner or via a Hand Held Terminal
- ▶ Single Pick Complete issuing to Work Order/Schedule
- ▶ Apply 'Pick Code' restrictions and definitions so small volumes can be directed to automated delivery systems and excluded from manual
- ▶ Apply Product Verification Processing for additional security
- ▶ Record Filling Volumes by Product
- ▶ Record Component Part Lot consumption times to help improve Lot Traceability
- ▶ Print Pallet Tickets prior to and after Work Order Receipt
- ▶ Perform Work Order/Schedule Return Processing
- ▶ Option to prevent Work Order Receiving before issuing has been completed
- ▶ Work Order/Schedule Receipts, which trigger any back and forward flushing activity
- ▶ Print Goods Received Notes, Tags and Labels, with Bar Codes
- ▶ Perform Manufacturing and Accounting Close Activities
- ▶ Manage Co Products, By Products, Waste
- ▶ Recap, Summary and Detailed Analysis Enquiries and Reports
- ▶ Total history maintained for Work Order/Schedules of what was made, when, how, what it cost, how it should have been made, what it should have cost etc
- ▶ Issue Recycled/Reworked Raw Materials/Components, with full security, to Work Order/Schedules
- ▶ Operation Additional Specification Data Recording available – based on user defined specifications
- ▶ Actual data entry verification by one or more additional users
- ▶ Work Order Schedule Workbench for ease of maintenance and processing

pick processes

SCADA Integration

- ▶ Download Local Work Order/Schedule Details
- ▶ Upload Work Order/Schedule Issue Details

Inventory Management

- ▶ Part/Product Definition
- ▶ Part Number Copy Wizard
- ▶ Retail Part upload facility
- ▶ Quality Management Integration Definition
- ▶ Utilise Retail Groups for faster set up
- ▶ Full Part/Product Synchronisation across multiple warehouses (Inventory Centres)
- ▶ WEEE Disposal considerations
- ▶ Sales Kit definition processing
- ▶ Integer ordering definition
- ▶ Base data for order splitting based on Part/Product attributes
- ▶ Catchweight definition and management
- ▶ Warranty definition for subsequent usage
- ▶ Media, CD, DVD, Video specific data structures
- ▶ Pack/Container Definition
- ▶ Work Order/Schedule Pick Restrictions
- ▶ Simplified Fast Track Part Definition Process
- ▶ Single point set up for all Part/Product information

Product Subsets

- ▶ Define Parts/Products as belonging to a subset for sales margin analysis
- ▶ Subsets are user defined based on related or unrelated Parts/Products with flexible criteria
- ▶ Select from 50+ data items for inclusion/exclusion from a Product subset

Inventory Status Code Management

- ▶ On Hand/Stock, On Order definitions
- ▶ Quality Management Status Change
- ▶ Planning Availability – Immediate, Never, Departure Date
- ▶ Include In Available To Promise
- ▶ Create Purchase Accruals for nominated Statuses
- ▶ Auto Change of Inventory Status on Shelf Life Expiry
- ▶ Vendor Consigned Inventory
- ▶ Cyclical Quality Testing Regimes
- ▶ Status departure date definition and processing

Period End

- ▶ Dynamic Period End processing
- ▶ Audit Trail of General Ledger Postings
- ▶ End of Period Quantities and Values stored for an unlimited amount of time
- ▶ Optionally store Transaction summaries for analysis and enquiry
- ▶ Close by Inventory Centre or by Company

Inventory Centre Transfers

- ▶ Create Inventory Centre Transfers by entry, from re-order report, from Item Attributes Matrix processing, from Retail Management Stock Allocations and more
- ▶ Inventory Centre Transfer documents can be single or multi lines
- ▶ Inventory Centre Transfers can be defined as Immediate or via In Transit
- ▶ The Inventory Status of the Part being transferred can be optionally specified
- ▶ Hard Allocations can be created for Inventory Centre Transfers based on Inventory Status
- ▶ Inventory Centre Transfer Picking Lists can be generated and processed
- ▶ Any cost differences are accounted for and journals posted
- ▶ In Transit receipting can be automated to a single key process
- ▶ Print In Transit documentation
- ▶ Full enquiry and reporting facilities are available

Inventory Movement Analysis

- ▶ Analyse on a daily basis, all 'Ins' and 'Outs' scheduled for the Inventory Centre/Warehouse
- ▶ Date/Time effective
- ▶ Includes: Purchase Orders, Sales Orders, Work Orders, I/C Transfers, Customer Returns and Vendor Returns

For more information visit the Answer Solutions website or contact us.

Answer Solutions Ltd

The Innovation Centre
Festival Drive
Ebbw Vale
NP23 8XA

w: www.answersolutions.com
e: info@answersolutions.com
t: 01495 356771
f: 01495 356774