

Control the manufacturing process

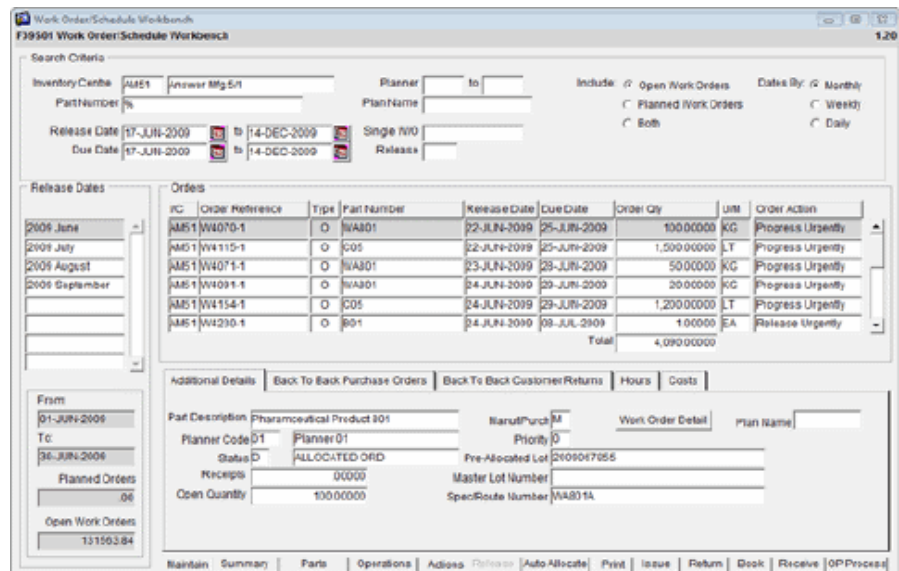
- ▶ Manage work in progress
- ▶ Accurately and effectively record detailed information
- ▶ Extends the basic Manufacturing Work Order/Schedule Execution system
- ▶ Change released Work Order/Schedules
- ▶ Additional verification processing
- ▶ Ensure a high level of product quality
- ▶ Verification recording processing tools

Use Answer Manufacturing Management to control the manufacturing process, manage WIP and record operation status and labour times. The ability to accurately and effectively record this detailed information can be central to the smooth running of this business.

Maintain Released Work Order/Schedules, Booking Operational Labour, Material and Production Facility/Resource Usages, Recording Downtime, Scrap and generate the Manufacturing Documentation required. The Manufacturing Management module extends the basic Manufacturing Work Order/Schedule Execution system, managing your Work Order/Schedules, which is part of the Inventory Management module.

This module also enables all changes to released Work Order Schedules with regard to Operation Changes, Additions, Deletions; Material Changes, Additions, Deletions and also any changes to Production or Labour Facility requirements.

As an integral component of Answer Enterprise, Manufacturing Management integrates with Inventory Management, Product Definition Management, Planning and the General Ledger. It will ensure a high level of product quality is managed.



Management of in progress Work Order/Schedules

- ▶ Ability to maintain Work Order Summary Details – dates, times, comments, quality requirements
- ▶ Ability to 'link' Sales Order Lines to Work Orders
- ▶ Ability to like un-received PO Lines to Work Order Component/Raw Material requirements
- ▶ Add, Maintain and Delete Work Order Raw Material/Component Allocation details
- ▶ Add, Maintain and Delete Work Order Operations
- ▶ Add, Maintain and Delete Skill Level Requirements
- ▶ Maintain Work Order Operations Labour, Material and Production Facility requirements
- ▶ Maintain Work Order Operation Backflushing requirements
- ▶ Record any Work Order Miscellaneous Costs/Charges
- ▶ Record Filling Volume details which calculate Average Fill, Total Fill and so on
- ▶ Ability to record Component/Lot Consumption/Usage Times
- ▶ Full integration of all bookings to General Ledger
- ▶ Work Order/Schedule Workbench facility

Operational Transaction Management

- ▶ Record Operational Work Centre/Resource Time Usages and Reversals
- ▶ Record Operation Labour Times with options to clock in and clock off of operations
- ▶ Ability to book multiple Operation Recording Transactions
- ▶ Record Operation Level, Material, Labour and Production facility usage
- ▶ Ability to record Downtime and Operation delays
- ▶ Ability to record Scrap for later analysis
- ▶ Single or Multiple Work Order Operational Scheduling
- ▶ Full Transaction Booking History maintained by Work Order/Schedule
- ▶ Simplified Booking link from Next and Outstanding Operation enquiries
- ▶ Simplified operational recording using 'touch' screen facility

Work Order/Schedule Manufacturing Documentation

- ▶ Ability to produce Work Order/Schedule Raw Material/Component Worksheets; Operations Worksheet; Labour and Operation Tickets
- ▶ Ability to produce Work Order/Schedule Manufacturing Batch Documentation
- ▶ Ability to produce Operation Level Worksheets for Materials, Production and Labour facilities
- ▶ Produce Nominal Filling Volume Analysis including Tolerances
- ▶ Produce Bar Coded labels as required
- ▶ Ability to produce Pallet Tickets prior to Work Order Receipt

Operation/Scheduling Resource Management

- ▶ Forward and Backward Operation by Operation Scheduling
- ▶ Option to auto schedule at time of Work Order Release
- ▶ For more traditional industries schedule single Orders to calculate Earliest and Latest Start Dates and Earliest and Latest Finish Dates on an Operation by Operation basis
- ▶ Similarly Schedule Multiple Orders
- ▶ Multiple Capacity Plans
- ▶ What If Scheduling Scenario's
- ▶ Links to 'Preactor' range of Finite Capacity Scheduling and Advanced Planning and Scheduling Tools

Cost Comparison Management

- ▶ Cost Simulation optionally input to Selling Price Review facilities in Sales Order Processing for Price and Margin analysis based on proposed or actual Cost Changes
- ▶ Compare Cost Simulations to Current Costs

Work In Progress Revaluation

- ▶ Revalue Work In Progress
- ▶ Optionally generate Revaluation journal postings

Work In Progress Enquiries and Reports

- ▶ Work Order/Schedule Yield Analysis
- ▶ Work Order/Schedule Cost and Variance Analysis
- ▶ Over Issue enquiry
- ▶ Operation Delay enquiry
- ▶ Down Time enquiry
- ▶ Work Order/Schedule status enquiry
- ▶ Outstanding Operations Enquiry
- ▶ Back to Back Linked Sales Orders and Work Order/Schedule enquiry
- ▶ Part Run Out Enquiry
- ▶ Late Start and Late Finish Work Order/Schedule report
- ▶ Work Centre/Resource Load reporting
- ▶ Work Order/Schedule status reporting
- ▶ Manufacturing Quantity, Parts Explosion and Shortages enquiry and report
- ▶ Work In Progress report

Verification Recording Processing

Additional verification recording processing allows transactions, when entered by the end user, to be 'verified' or 'signed off' by one or more additional users.

The verification details are stored for subsequent analysis and reporting.

This Operational Verification Recording complements similar facilities that are available in the Inventory Management module.

This will help you satisfy the ever increasing demands of the various regulatory bodies.

For more information visit the Answer Solutions website or contact us.

Answer Solutions Ltd

The Innovation Centre
Festival Drive
Ebbw Vale
NP23 8XA

w: www.answersolutions.com

e: info@answersolutions.com
t: 01495 356771
f: 01495 356774