

Underpins and supports all other modules

- ▶ Core foundation module
- ▶ Split into Application Support and Systems Administration
- ▶ Combines with all modules to operate at high standards

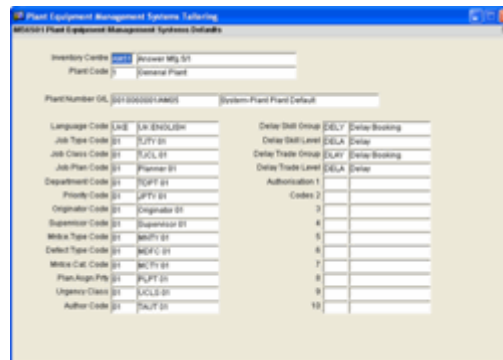
This module has two main elements:

- ▶ Application Management – contains features common to all modules, such as Units of Measure and Currency
- ▶ Systems Administration – contains features like defining menu structures, security, printer and environment management

Common module maintenance, defaults and tailoring, security at company and inventory centre levels are supported, making general maintenance more straightforward.

Common maintenance also supported include:

- ▶ Printer and report management
- ▶ User and menu management
- ▶ System security
- ▶ Environment Management
- ▶ Help Text Management



As an integral component of Answer Enterprise, Systems Administration integrates with every single Answer module. It ensures the Answer Application and Environment operate at a very high standard, enforcing Company procedures and policies in a manner to suit your business.

Application Management

- ▶ Maintain information about elements that are common to all modules such as Inventory Centres, Bank Details, Currencies and Rates, VAT/Tax Codes, Rates and Periods, Units of Measure and Conversion Factors, Projects and Tasks, Employees, User Calendars, User Specifications, Product/Part Number Structures, ECN Controls, Generic Codes Tables, Lot Control Methods and more.
- ▶ Define a wide range of system tailoring parameters and default system values that allow flexible operation of the application. Tailoring options are available for the system as a whole and additionally Quality Management, Plant Maintenance, Warehousing, Capacity Planning, Master Production Schedule Planning, Material Resources Planning, Purchasing, Inventory, Warehousing Additional, Sales Order Processing and Inter-Company relationships.
- ▶ Further tailoring parameters can also be found within the specific Answer Modules.
- ▶ Define and maintain security clearance at application level rather than module level. This gives finer grained security clearance than just access to run a specific program. Access can be individually defined for Inventory Centre, Company; Transaction; Bill of Material Type; Model Type; Sales Order Processing options and Accounts Payable options
- ▶ Define a further level of security within programs by granting System Privileges to perform certain functions
- ▶ Ability to define structured Part Numbers (overlays), Inventory Centre addresses, Employees, Copy Common Planning Forecasts, General Ledger Journal drill down definition, Inventory Centre Relationships and more.

Printer and Report Management

- ▶ Mirror the output facilities of each site within Answer by defining printers and their individual capabilities.
- ▶ Each report has a default printer but this may be overridden for each user and each report. For example users at remote sites will receive all their reports at that site.
- ▶ Define job servers and queues that control the execution of reports and long running batch jobs.
- ▶ Job servers may be run on different machines and different platforms allowing flexible utilisation of resources.
- ▶ Job queues can be defined to run at specific times which control the flow and execution of jobs. For example storing long running jobs to be executed overnight.
- ▶ All submission processes, reports, processing, jobs and so on can all now have one off text/comments annotated which are stored, viewed and printed.
- ▶ Output Documents e.g. Purchase Orders, Invoices, Credit Notes etc can be configured to be emailed to the relevant Vendor or Customer.
- ▶ Email Templates and Document Configuration is under user control.
- ▶ User definitions of report labels/titles.

User and Menu Management

- ▶ Create and maintain Answer users with a wide variety of user specific options including default menus, printers and application values such as default Company, Inventory Centre and Buyer ID's.
 - ▶ Answer is supplied with a comprehensive menu structure allowing access to all Answer functions.
 - ▶ User defined menus can be defined that closely match the tasks required for each user.
 - ▶ Display date effective messages to users when they log on. Messages can be defined by user, company, inventory centre and so on, and displayed appropriately.
 - ▶ Answer menus can be extended to incorporate external functions and applications required for each implementation.
 - ▶ Define pop-up enquiries that provide a list of useful related enquiries specific to the task being undertaken.
 - ▶ Answer Menus can be of traditional construction or a 'Tree/Explorer' structure selectable by user.
 - ▶ 'Tree/Explorer' structure menus enable individual users to store and maintain their favourites.
- ▶ Menu Navigation can be by:
 - Option Select
 - Program/Object Name
 - Key Word definition
 - Search for characters
 - Via favourites
 - ▶ Answer menus can optionally only display those functions the user is authorised for
 - ▶ Users can create their own iconic Tool Bars generally or by application class
 - ▶ Password Change processing
 - ▶ User Logon and Activity Enquiry
 - ▶ Answer Enterprise can optionally monitor all Logon, Logoff and user activity, which can be viewed in real time via an enquiry. This also shows licence details, numbers of and so on.
 - ▶ Rejected User Logon Enquiry
 - ▶ Key Word definition

Application Security Management

- ▶ Control access to application data structures within Answer programs that allow for flexible partitioning of user operations. Access can be controlled for Companies, Inventory Centres, Inventory Transactions, Bill and Model Types.
 - ▶ Extend Sales security to change Prices, Price Lists, Discounts, Amounts, Back Orders and more
- ▶ Extend Accounts Payable security to force Invoice Matching, Change Match Price and Quantity, Variance Values and Authorisation Values
 - ▶ Application Privileges further refine security within nominated Answer programs and are used for critical element control

System Security Management

- ▶ Control flexible access to Answer programs and features by user or role mechanisms.
 - ▶ Roles allow typical security profiles to be maintained and used for departments or similar user functions.
 - ▶ Privileges provide finer grained access to Answer application functions such as ability to view costs or perform sensitive operations.
- ▶ Define your Security policy, how often passwords must be changed, password length and character content and let Answer enforce this policy.

Environment Management

- ▶ Maintain support for running Answer on different platforms.
- ▶ Access and search the Oracle and Answer data dictionaries.
- ▶ Manage internal database structures used by Answer.
- ▶ Maintain Additional Detail Tables that allow standard Answer data structures to be extended according to customer's specific requirements.
- ▶ Ability to monitor table locks

Help Text Management

- ▶ Control access to comprehensive documentation and help text available
- ▶ Program Sensitive Help is available online at the touch of a button.
- ▶ Help text available in wide variety of formats including text files, HTML, Microsoft HTMLHelp, PDF (Adobe Acrobat) and word processing files.

Procedure Management

- ▶ Answer Procedures enable programs and help documentation to be linked in order to perform common tasks.
- ▶ Answer Procedures are processed via a wizard style interface
- ▶ Answer Procedures can form the basis of your procedures and processes library, a requirement for the various registration processes

Additional Detail Management

- ▶ Define the Answer structures, tables, for which further details are to be collected
- ▶ Define the data, columns, that are to be collected, what the data is, length, type, validation requirements etc
- ▶ Data Entry facilities to capture the additional data

Generic Answer Update Facility

- ▶ Facility to process pre-defined SQL statements/blocks

Sizing Management

- ▶ Tools to assist in the initial sizing of the Oracle database according to individual requirements of customers.

Purge Management

- ▶ Provide purge mechanisms for various Answer data structures to remove or archive data that is no longer required.

Email Management

- ▶ Define by application, Contact Centre and Portal, details of email templates to be used.

Auditing Management

- ▶ Table auditing allows all or selected changes to any Answer table structure to be recorded.
- ▶ Table auditing can be enabled for insert, update or delete operations.
- ▶ Table auditing can take place when any value is changed or conditional on required changes only.

Job Monitoring

A simple to use job monitoring facility is available for end users to complement the experienced user and administrator versions. The new monitor will show today's jobs and sits in an independent window thus not interfering with your day to day operations.

Sortable column/screen headings

Wherever technically possible, 'sortable' headings are integrated into various classes of Answer programs, enquiries and so on

This facility enables you to define user text, colours, fonts, default hover help and more for:

- Screen names
- Buttons
- List Items
- Tick Boxes

Sortable Column Headings also allow you to:

- Filter the Data
- Apply Part Subsets to Filter
- Graph the Data
- Export to Excel
- Create as a PDF
- Create a Dataview
- Sum/Total Numeric Columns

Dynamic User Querying

This new facility enables SQL queries to be run from within Answer. Once defined, each query can be saved with a name and retrieved at any time.

The output can then be exported to a chosen format:

- Screen
- Text file
- PDF file
- HTML file
- Excel Spreadsheet
- Word Mail Merge

This facility can be used by your administrator to answer many of the minor ad hoc questions that standard reports and enquiries may not be able to answer.

Basic Time and Attendance

- ▶ Define Company and Employee/User Calendars
- ▶ Define Time/Shift Profiles
- ▶ Record absence – Doctor, Dentist, Holiday etc.
- ▶ User Clocking On/Clocking Off
- ▶ Determine who's not in who should be, who's in

Output Management

- ▶ Flexible management of output documents and reports generated by Answer.
- ▶ Output may be generated in various formats including text files, HTML and PDF (Adobe Acrobat) format.
- ▶ Output files may be viewed from any workstation using standard browser applications
- ▶ Users can review their own reports and the status of these reports.

Dataviews and Data Collections

- ▶ Dataviews are User-defined enquiries
- ▶ Determine Selection Criteria, Data Records and Additional Details
- ▶ Format Fields
- ▶ Optionally display a graph
- ▶ Apply Conditional Highlighting
- ▶ Provide Drilldown options

- ▶ Data Collections are a collection of up to 9 Dataviews (depending on screen resolution)
- ▶ Display each Dataview in either tabular or graphical format
- ▶ Create relationships between Dataviews in a Collection
- ▶ Provides a Dashboard style enquiry

- ▶ Dataviews and Data Collections can be attached to Answer Menus and standard security applied
- ▶ Dataviews and Data Collections contain Sortable Columns

who should not be, who has not clocked off etc.

- ▶ Combine with Work Order Operation Clocking on/off to get a better picture of Employee utilisation

For more information visit the Answer Solutions website or contact us.

Answer Solutions Ltd

The Innovation Centre
Festival Drive
Ebbw Vale
NP23 8XA

w: www.answersolutions.com

e: info@answersolutions.com

t: 01495 356771

f: 01495 356774