

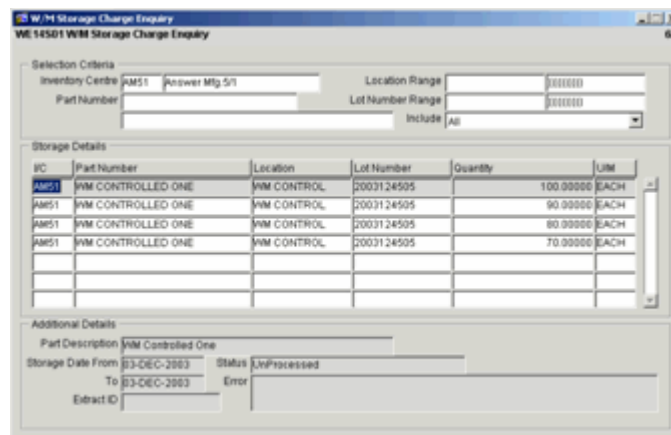
Flexible charging for space and warehouse movements

- ▶ Levy charges for space and warehouse movements
- ▶ Define unit of measure charging elements for storage/space
- ▶ Charge different customers different amounts for the same time period
- ▶ Apply charging values to Warehouse Activities
- ▶ Extract and value charging details at recognised periods of time
- ▶ Extract history facilities

Answer Warehouse Charging is an optional module that can be installed with Answer Warehouse and allows third party or internal warehouse charges to be levied on its customers for space and warehouse movements.

At the heart of the charging process is the extremely flexible way in which space and warehouse movements can be charged for. The first step in this process is to define the necessary/required charging matrices. These can be any combination of the following:

- ▶ Company
- ▶ Division
- ▶ Branch
- ▶ Department
- ▶ Customer
- ▶ Customer Delivery Location
- ▶ Warehouse (Inventory Centre)
- ▶ Part
- ▶ Units of Measure
- ▶ Combinations of the Part Analysis Hierarchy structures



Charging elements

Once matrices have been defined, the charging elements for these matrices can be identified.

The charging elements for storage/space is the value defined per Unit of Measure e.g. Cases, Pallets, together with a Charging Period; Day, Week, Month.

Further options enable the provision of charging for multiples, minimum charging, period units i.e. 3 days or 1 week, as well as providing a User defined rounding capability. This caters for the situation where different customers can be charged different amounts for storing pallets for the same period.

Charging values can also be applied to the various Warehouse Activities/Transactions such as Pick, Put, Count, Move, etc, and so on. These Charge Values can be determined by the User for each transaction for the relevant matrices.

When required the Charging details can be extracted, valued and either be an extract only for review or a Debit Note or Invoice created for the Customer for Storage & Movement activities.

The Extract History enables enquiry facilities to track Storage Charge and Warehouse Movements Charge details.

For more information visit the Answer Solutions website or contact us.

Answer Solutions Ltd

The Innovation Centre
Festival Drive
Ebbw Vale
NP23 8XA

w: www.answersolutions.com
e: info@answersolutions.com
t: 01495 356771
f: 01495 356774